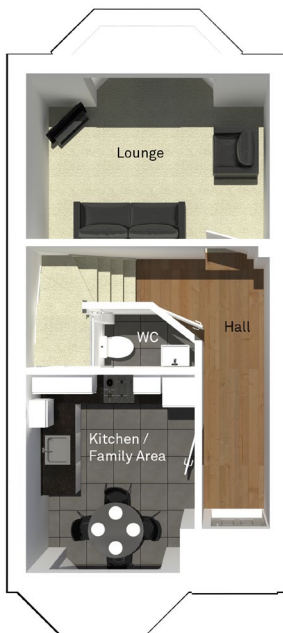


The Rishton

3 bedroom, 3 storey semi-detached house with parking space



Ground floor



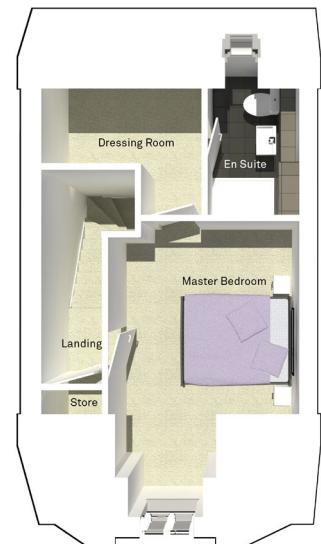
Lounge	4394mm x 3757mm
Kitchen/Family Area	3047mm x 4342mm
WC	1919mm x 1085mm

First floor



Bedroom 2	4394mm x 3007mm
Bedroom 3	4394mm x 3588mm
Bathroom	1580mm x 2907mm

Second floor



Master Bedroom	3262mm x 5032mm
En Suite	1580mm x 2548mm
Dressing Room	1677mm x 2739mm

N.B. All dimensions shown are maximum structural dimensions and do not include plaster finish. CGI shows typical Rishton house. Seddon Homes pursues a policy of continuous improvement. So whilst every effort has been made to ensure that this information is correct, it is intended only as a guide and the company reserves the right to alter the specification as necessary and without prior notice. Please note that the layout of some homes may be the reverse of that shown here. Specific properties may also differ from this picture in respect of window positioning, brick colour and other design details including no garage, so please check with the Sales Advisor if clarification is required. This does not constitute or form any part of a contract or sale.